

APPENDIX L

LIFT STATION FIELD EVALUATIONS

THIS PAGE INTENTIONALLY LEFT BLANK

Bonney Lake Lift Station Notes – Following list station observation conducted on 06/14/2016

General Notes:

- City would prefer load stacks on generators
- Stations do not have force main isolation valves
- City prefers pressure transducers with float backups

LS 1 – 18215-A 95th Loop St. E.

- Piping in valve vault very close to floor
- Small grease mat in wet-well
- No general issues or odor issues



LS 2 – 9914 176th Ave. E.

- No general issues or odor issues
- This station is not equipped with the cities standard “Flygt” pumps
- Future development coming to this station
- Bioxide present at station



LS 3 – 18704 82nd St. E.

- No general issues or odor issues
- Station services a school
- Handles a large amount of grease from the school



LS 4 – 18308 77th St. E.

- No general issues or odor issues



LS 5 – 7002 Myers Road

- No general issues or odor issues
- Very small service area



LS 6 – 18723 A McGhee Drive

- No general issues or odor issues
- Low flow station
- Pump only has 1400 hours from the last 31 years



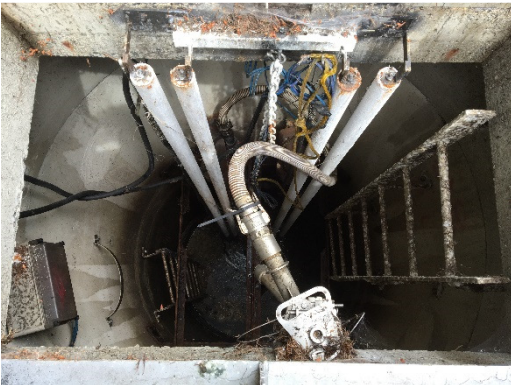
LS 7 – 19307 65th St. E.

- No general issues or odor issues
- Low flow station



LS 8 – 6603 185th Ave. E.

- No general issues or odor issues



LS 9 – 9300 225th Ave. E.

- *Take a further look at future options for this station*
- Very shallow wet well
- Long problematic force main leaving this station
- Bioxide present at station but not used
- Floor drain in valve vault does not drain effectively



LS 10 – 22609 Connells Prairie Rd.

- No odor issues
- Bioxide present
- Minor coating issues in valve vault
- This station scheduled to be upgraded
 - Two future lift stations to come to this station



LS 11 – 5531 W. Tapps HWY

- No general issues or odor issues



LS 12 – 20601 60th St. E.

- No general issues or odor issues
- Twin of station 16



LS 13 – 20919 Church Lake Drive

- No general issues or odor issues
- Newer pressure transducer



LS 14 – 21002 64th St. E.

- No odor issues
- Discharge piping and guide rails showing signs of age and rust
- Force main leaving this station runs over the lake on a bridge alongside water main



LS 15 – 7418-A Vandermark Road

- No odor issues
- Discharge piping slightly rusty
- Low flow station



LS 16 – 20825 60th St. E.

- No general issues or odor issues
- Twin of station 12
- Largely fed by grinder pump stations

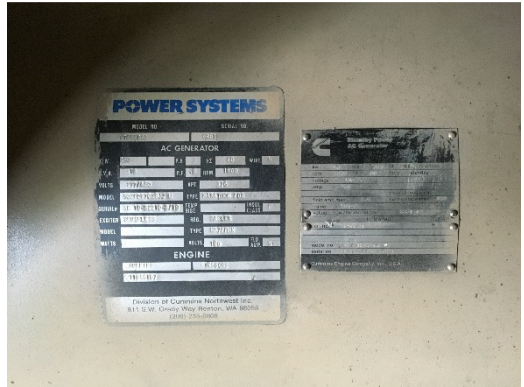


LS 17 – 9301 Angeline Rd.

- Largest lift station
- Buildings present at this station
- No odor issues
- Mulch filters used for odor control
- Bypass port present
- 95% of city's sewer passes through this station
- Old generator (1985) described as a “bomb”, was almost replaced but cost of removing generator from building was too high



LS 17 cont. – 9301 Angeline Rd.



LS 18 – 21301 S.R.-410

- No odor issues
- Coal tar epoxy coating in wet-well coming off of lower walls
- Possible new lift station being put in near here in the future



LS 19 – Willowbrook (Address not listed on sign)

- No odor issues
- Bioxide present
- Wet-well coating peeling in various locations
- Bypass pumping port at this station



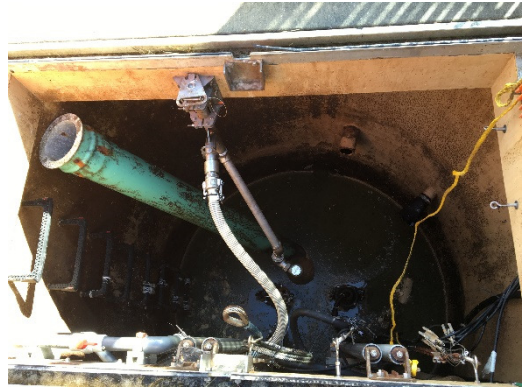
LS 20 – Spring Haven (Address not listed on sign)

- No odor issues
- Coating failures in wet-well and valve vault due to H₂S coming from station 9
- Station has an ultrasonic transducer which was installed recently and is already failing



LS 21 – West Hill Dr.

- No general issues or odor issues
- Charcoal filters used for odor control
- Availability for a third pump
- Pumps at this station were specifically designed for this station
 - Having a spare pump would be useful
- Building present



LS 21 cont. – West Hill Dr.



LS 22 – Brookfield (Address not listed on sign)

- No general issues or odor issues
- Bioxide present
- Fed largely by grinder pump stations
- Pig port present



LS 23 – 22225 96th St. East

- Not yet operational

